



SKI & BOARD TUNING

GET THE
WORLD CUP
FEELING

SKI & BOARD TUNING OF UNIQUE
QUALITY. BASE FINISH IN WORLD CUP
OPTICS WITH HIGH CAPACITY.

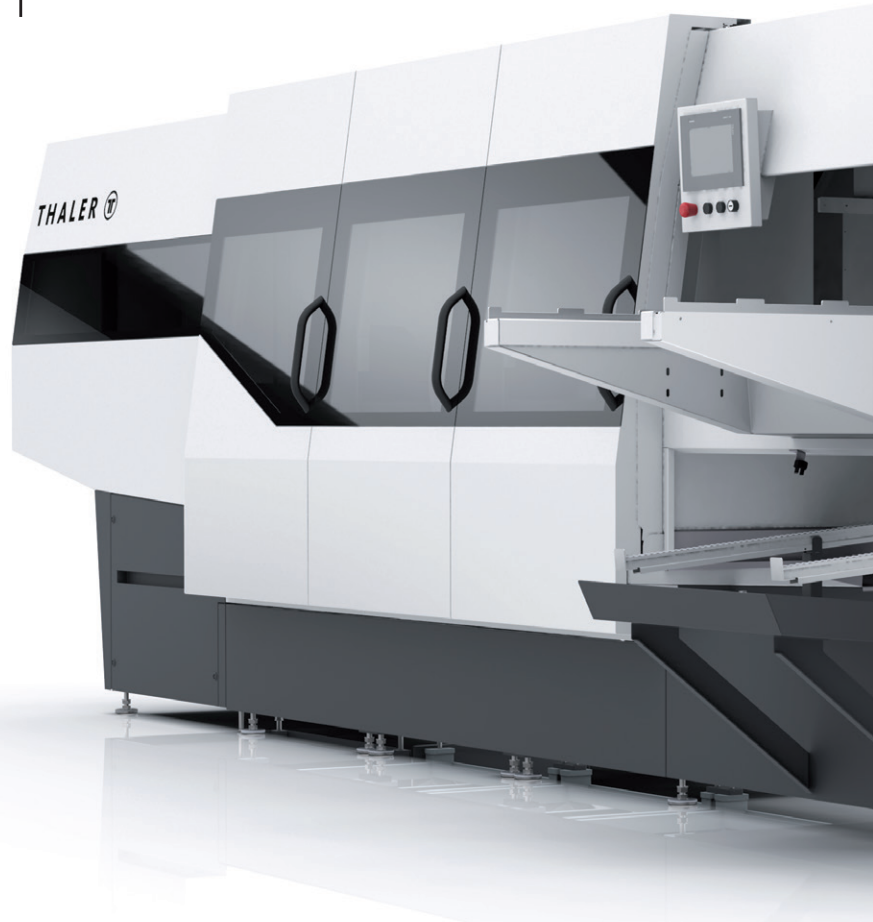
4 STONE SYSTEM

FOR PERFECT BASE FINISH
AND DESIGN WITH HIGH
CAPACITY.

X4
TRANSFORMER

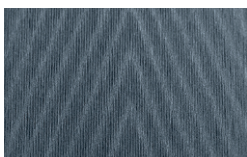
Race ready ski tuning

OUR SERVICE MACHINES
COMBINE ALL BENEFITS OF THE
WELL ESTABLISHED TECHNOLOGIES
IN THE FIELD OF SKI-PREPARATION.

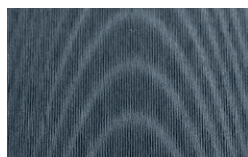


SKI & BOARD TUNING OF UNIQUE QUALITY

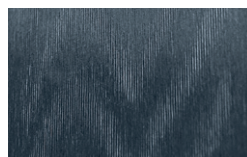
In addition to the perfect edge tuning, the design of the running surface is the focus of our new development. This is evident, even for non-professionals. It feels like having the perfect ski, which is considered a "must-have" on the ski run. Perfect ski service allows unique skiing experience of top quality.



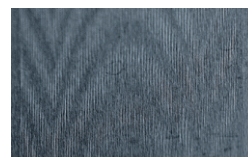
C-Tree



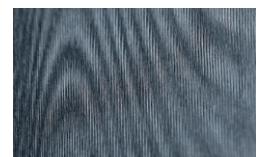
Bow Design



Wave Design



The Bat



Voodoo

INNOVATIVE TRANSPORT SYSTEM / SKI TRANSPORTATION VIA PRESSURE TAPPET >

LATERAL EDGE DISC / CONTINUOUS QUALITY AND PROCESSING TECHNIQUES THAT PROTECT THE MATERIAL >

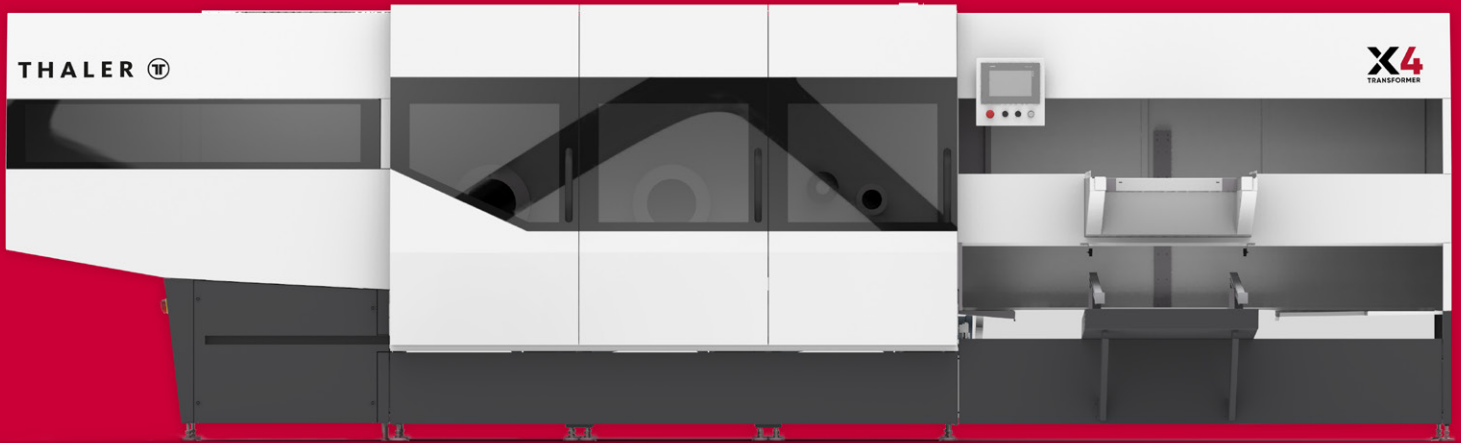
TUNING VIA POLISHING DISC / VARIABLE EDGE TUNING ALONG THE FULL LENGTH OF THE SKI >

EASY OPERATION / SHORT TRAINING PERIOD FOR EMPLOYEES >

THALER E.U.

Wagenweg 3a . 6780 Schruns / Austria . T +43 5556 77857
office@thaler-systems.com . www.thaler-systems.com

THALER



SKI MOVES IN

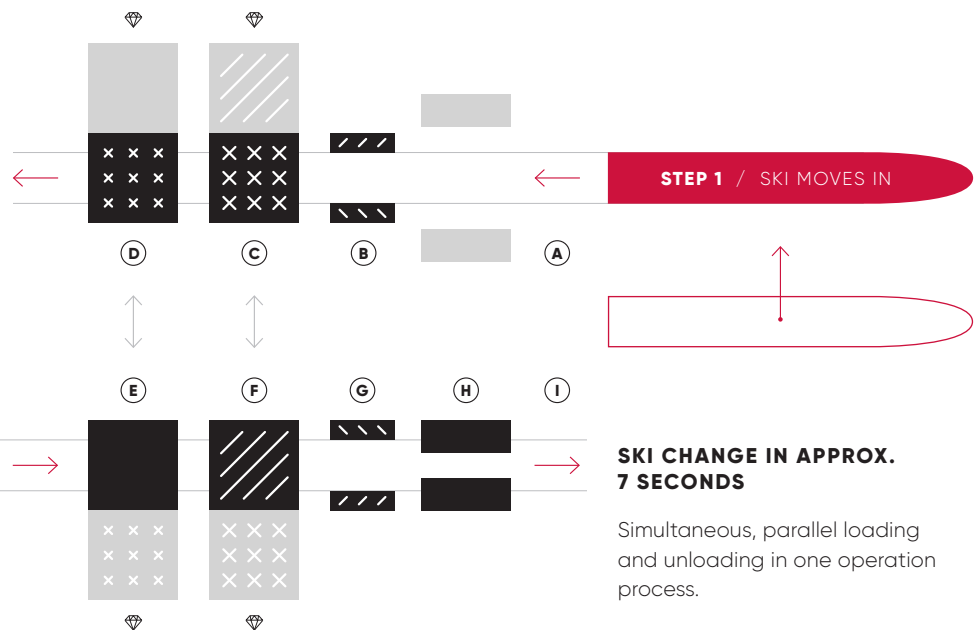
- A** automatic loading
- B** Edge grinding (Disc)
- C** Coarse pre-grinding at high speed and high removal (Stone 1)
- D** Fine pre-grinding at medium speed and high removal (Stone 2)

SKI MOVES OUT

- E** Smoothing serves as the basis for surface design, removal of protruding fibres at low speed (Stone 3)
- F** Structural grinding for perfect surface design, adjustment of speed as required (Stone 4)
- G** Edge tuning, precise edge geometry with considerate handling of edge thickness (Disc)
- H** Final polishing for long service life and highest ski performance (Polishing wheel)
- I** automatic ski ejection

4 GRINDSTONES WITH OWN DRESSING DIAMOND

The four grindstones each move into the processing line and thus enable a perfect base finish and design with high capacity.



THALER E.U.

Wagenweg 3a . 6780 Schruns / Austria . T +43 5556 77857
office@thaler-systems.com . www.thaler-systems.com